

# WENDLAND HOLSTEINS PROMOTION



DEU 000361214538 • German Reg. No. 10.833404

born: 05/04/2019

Breeder: Jürgen Hintze, Trebel, Germany

aAa 243 K-Cn: AB β-Cn: A2/A2



PHENOMENAL PRODUCTION SIRE · HIGH LONGEVITY · SUPERB UDDER HEALTH

<b>Progenesis Prosperous</b> (Magnus x Supershot)  <b>Wendland Holsteins Lucia</b> VG-87 3/2 lac 11529 3.61 416 3.30 381 best lac 1 13612 3.66 498 3.35 456	<b>Westcoast Kerrigan</b> (S.: Kingboy)  <b>Wendland Holsteins Lucy</b> VG-88 4/4 lac 10876 3.71 403 3.34 363 best lac 3 12680 3.56 452 3.15 399	<b>De-Su 11236 Balisto</b> (S.: Bookem)  <b>DG Scream &amp; Shout</b> VG-85 3/2 lac 9966 4.88 486 3.70 369 best lac 1 12116 4.72 572 3.52 427
---	--	---

<b>gRZG</b>	<b>135</b>	<b>gRZ€</b>	<b>1542€</b>
Total Merit Index		Economic Total Merit	

<b>gRZorganic</b>	Organic Total Merit	Rel. 83%	<b>124</b>
-------------------	---------------------	----------	------------

<b>gRZM</b>	Milk Production Index	<b>138</b>		
Daugh. 0 / Herds 0		Rel. 77%		
Milk kg	Fat %	Fat kg	Protein %	Protein kg
<b>+1658</b>	<b>-0.02</b>	<b>+63</b>	<b>-0.08</b>	<b>+47</b>

<b>gRZE</b>	Total Conformation Index	<b>111</b>	
Daugh. 0 / Herds 0		Rel. 81%	
Dairy Type	Body	Feet & Legs	Udder
<b>110</b>	<b>107</b>	<b>109</b>	<b>102</b>

<b>gRZHealth</b>	Total Health Index	Rel. 74%	<b>111</b>	
RZudderfit	RZhoof	DDcontrol	RZrepro	RZmetabol
<b>106</b>	<b>105</b>	<b>99</b>	<b>102</b>	<b>108</b>

<b>gRZFN</b>	Functional Herd Life	Rel. 69%	<b>111</b>
--------------	----------------------	----------	------------

<b>gRZS</b>	Somatic Cell Count	Rel. 78%	<b>110</b>
-------------	--------------------	----------	------------

<b>gRZD</b>	Milking Speed	Rel. 84%	<b>107</b>
-------------	---------------	----------	------------

<b>gRZR</b>	Daughter Fertility	Rel. 58%	<b>96</b>
-------------	--------------------	----------	-----------

<b>gRZRobot</b>	Robot Index	Rel. -%	<b>-</b>
-----------------	-------------	---------	----------

<b>gRZPers</b>	Persistence	Rel. 66%	<b>107</b>
----------------	-------------	----------	------------

<b>gRZcalffit</b>	Calf Health	Rel. 78%	<b>104</b>
-------------------	-------------	----------	------------

<b>gRZKd</b>	Calving paternal	Rel. 86%	<b>84</b>
<b>Calving Ease</b>			<b>Average</b>

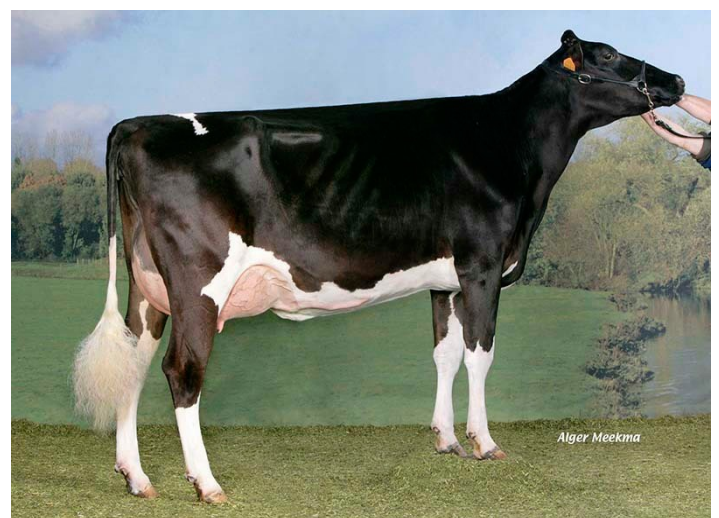
<b>gRZKm</b>	Calving maternal	Rel. 69%	<b>106</b>
--------------	------------------	----------	------------

<b>Sire Fertility</b>	<b>Excellent</b>
-----------------------	------------------

Linear Profile	88	100	112	124
Stature	small			tall 110
Rib Structure	flat			arched 104
Body Depth	shallow			deep 106
Strength	frail			strong 100
Rump Angle	ascending			sloped 96
Rump Width	narrow			wide 103
Rear Leg Set Side View	posty			sickled 98
Foot Angle	low angle			steep 108
Hock Quality	swollen			dry 99
Rear Legs Rear View	hock-in			parallel 104
Front Feet Orientation	outward			straight 98
Locomotion	bad			good 108
Rear Udder Height	low			high 104
Suspensory Ligament	weak			strong 109
Teat Placement Front	wide			close 111
Teat Placement Rear	wide			close 107
Fore Udder Attachment	loose			tight 100
Udder Balance	rear deep			front deep 98
Udder Depth	deep			shallow 100
Teat Length	short			long 89



Granddam:  
WEH Lucy VG-88



4th dam:  
Bertaiola Alexander Lidia VG-88